

# Focus Flex



Light Efficiency:

12 Lumen/Watt

Light Quality:

CRI: 69.9

Color Temperature:

5434 K

Output: 3062 lm

Peak: 8879 cd

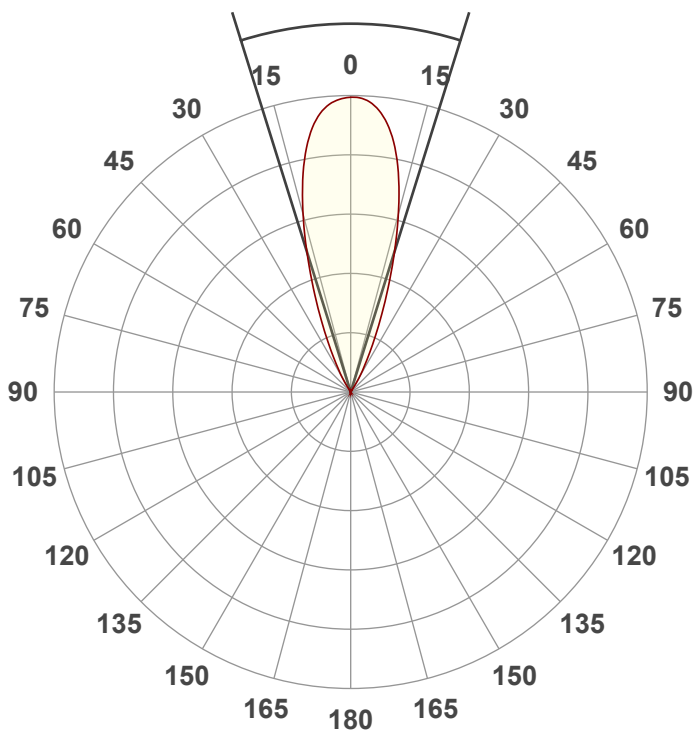
Power: 260 W

PF: 1.0



Beam Angle

34.7°



Test:

5400K Zoom Out

Date:

6/1/2022

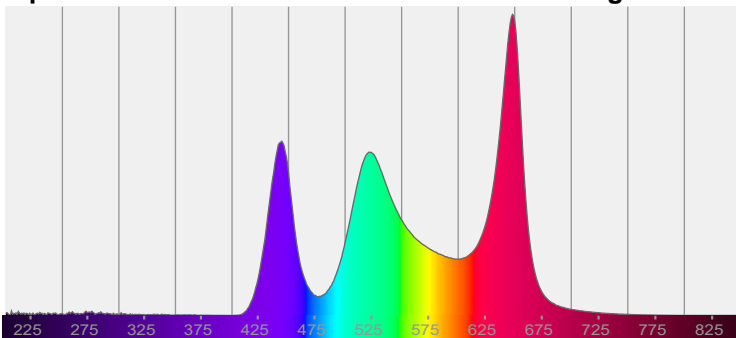
Note:

DMX @ 232

CIE 1931  
x: 0.334  
y: 0.356

Spectra

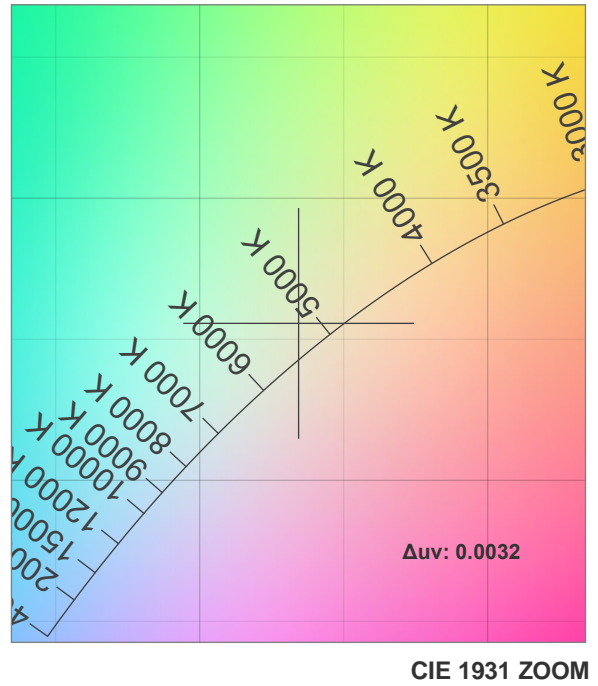
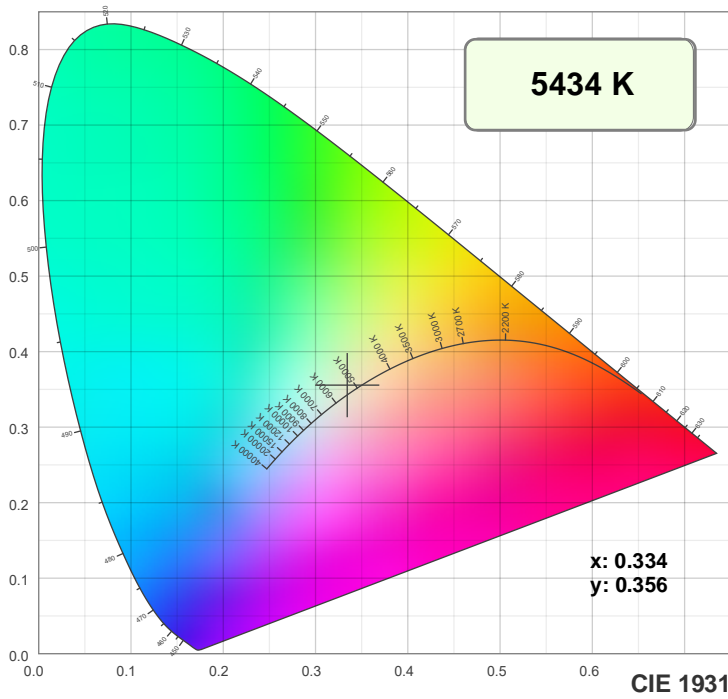
Dominant Wavelength: 574nm



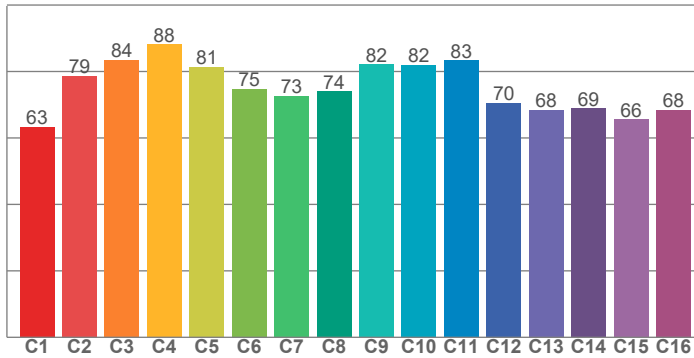
Power

Voltage: 119 V  
Current: 2.19 A  
Frequency: 0 Hz

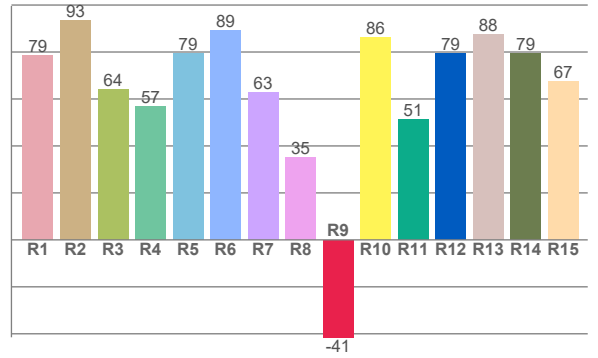
## Color Details



TM30: 76.6



CRI: 69.9 (R1-R8)



CRI R values, only R1-R8 are used to calculate final CRI value

R1	R2	R3	R4	R5	R6	R7	R8	R9	R10	R11	R12	R13	R14	R15
78.5	93.3	64.2	57.0	79.2	89.1	63.0	35.2	-41.5	86.2	51.3	79.2	87.7	79.4	67.4

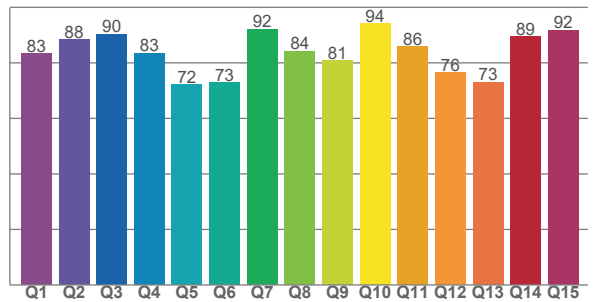
TM30 C values, 16 binned values out of total of 99 C values

C1	C2	C3	C4	C5	C6	C7	C8	C9	C10	C11	C12	C13	C14	C15	C16
63.3	78.6	83.5	88.1	81.3	74.7	72.7	74.0	82.2	82.0	83.3	70.5	68.4	68.8	65.5	68.4

CQS Q values

Q1	Q2	Q3	Q4	Q5	Q6	Q7	Q8	Q9	Q10	Q11	Q12	Q13	Q14	Q15
83.2	88.4	90.3	83.5	72.2	72.9	92.1	84.2	80.7	94.2	85.7	76.5	73.1	89.4	91.7

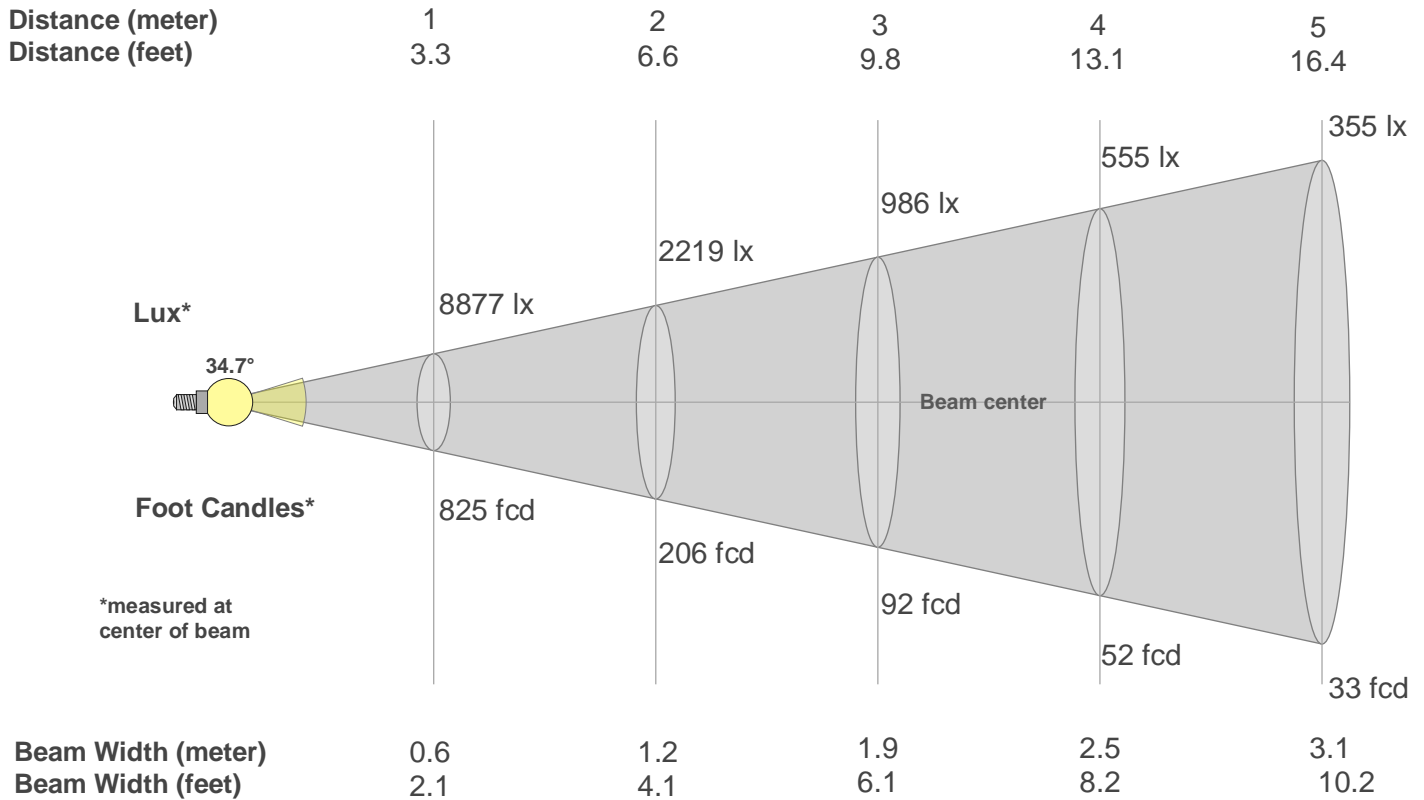
CQS: 82.4



## Color Parameters

Color Temperature	Color Rendering Index	Red Component	Color Fidelity	Color Gamut	Color Quality Scale	Color Coordinate CIE 1931	Color Coordinate CIE 1931	Color Coordinate	Color Coordinate	Color Deviation from Black Body
CCT	CRI	CRI R9	TM30 Rf	TM30 Rg	CQS	x	y	u	v	$\Delta uv$
5434 K	69.9	-41.5	76.6	117.5	82.4	0.334	0.356	0.203	0.323	0.0032

## Beam Details



### Beam Intensities from 1-20m

m	1	2	3	4	5	6	7	8	9	10	11	12	13	14	15	16	17	18	19	20
ft	3.3	6.6	9.8	13.1	16.4	19.7	23	26.2	29.5	32.8	36.1	39.4	42.7	45.9	49.2	52.5	55.8	59.1	62.3	65.6
lx	8877	2219	986	555	355	247	181	139	110	89	73	62	53	45	39	35	31	27	25	22
fcd	824.7	206.2	91.6	51.5	33	22.9	16.8	12.9	10.2	8.2	6.8	5.7	4.9	4.2	3.7	3.2	2.9	2.5	2.3	2.1

### Intensities in 0° C-plane

0°	2°	4°	6°	8°	10°	12°	14°	16°	18°	20°	22°	24°	26°	28°	30°	32°	34°	36°	38°
8877	8830	8709	8476	8098	7550	6846	5995	5073	4120	3232	2439	1772	1236	826	547	261	55	5	1
100%	99%	98%	95%	91%	85%	77%	68%	57%	46%	36%	27%	20%	14%	9%	6%	3%	1%	0%	0%

### Intensities in 90° C-plane

0°	2°	4°	6°	8°	10°	12°	14°	16°	18°	20°	22°	24°	26°	28°	30°	32°	34°	36°	38°
8877	8830	8709	8476	8098	7550	6846	5995	5073	4120	3232	2439	1772	1236	826	547	261	55	5	1
100%	99%	98%	95%	91%	85%	77%	68%	57%	46%	36%	27%	20%	14%	9%	6%	3%	1%	0%	0%

### Intensities in 180° C-plane

0°	2°	4°	6°	8°	10°	12°	14°	16°	18°	20°	22°	24°	26°	28°	30°	32°	34°	36°	38°
8877	8854	8729	8480	8094	7557	6855	6008	5074	4127	3235	2449	1788	1263	854	573	290	47	2	0
100%	100%	98%	96%	91%	85%	77%	68%	57%	46%	36%	28%	20%	14%	10%	6%	3%	1%	0%	0%

### Intensities in 270° C-plane

0°	2°	4°	6°	8°	10°	12°	14°	16°	18°	20°	22°	24°	26°	28°	30°	32°	34°	36°	38°
8877	8854	8729	8480	8094	7557	6855	6008	5074	4127	3235	2449	1788	1263	854	573	290	47	2	0
100%	100%	98%	96%	91%	85%	77%	68%	57%	46%	36%	28%	20%	14%	10%	6%	3%	1%	0%	0%

Beam Angle 50%	Field Angle 10%	Cutoff Angle 2,5%	Intensity Ratio in 120° Cone	Intensity Ratio in 90° Cone
34.7°	55.4°	64.8°	100.0%	100.0%